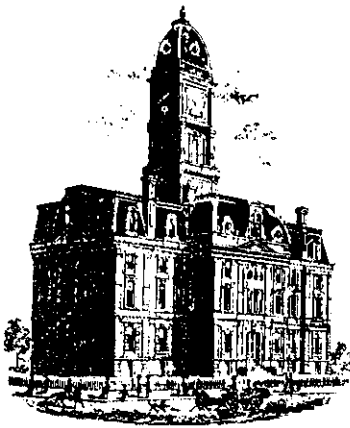


Drain: BLISS JOURNAL **Drain #:** 52
Improvement/Arm: CANTER CROSSINGS - BROOKSTONE PHASE I
Operator: J. LIVINGSTON **Date:** 2-3-04
Drain Classification: Urban/Rural **Year Installed:** 2003

GIS Drain Input Checklist

- Pull Source Documents for Scanning JL
- Digitize & Attribute Tile Drains _____
- Digitize & Attribute Storm Drains _____
- Digitize & Attribute SSD _____
- Digitize & Attribute Open Ditch _____
- Stamp Plans _____
- Sum drain lengths & Validate _____
- Enter Improvements into Posse LM / JL
- Enter Drain Age into Posse _____
- Sum drain length for Watershed in Posse _____
- Check Database entries for errors _____



SURVEYOR'S OFFICE

Hamilton County

Kenton C. Ward, Surveyor

Phone (317) 776-8495

Fax (317) 776-9628

Suite 188

One Hamilton County Square

Noblesville, Indiana 46060-2230

February 20, 2003

To: Hamilton County Drainage Board

Re: Bliss Johnson Drain, Conner Crossing of Noblesville,
Brookstone Phase One Relocation

Attached is a petition and plans for the proposed relocation of the Bliss Johnson Drain. The relocation is being proposed by Primrose Development, LLC. The proposal is to intercept the original Bliss Johnson Drain as constructed in 1939 at or near Station 36+10. The Johnson Drain shall be rerouted through the new storm system to be constructed as Conner Crossing of Noblesville, Brookstone Phase One. The drain shall connect to the new system being constructed as Conner Crossing of Noblesville, Phase One Entry. This shall be at the retention area located in Common Area "H". This shall replace the original Johnson Drain to Sta. 44+50.

This line will consist of the following:

21" RCP	337 ft	27" RCP	33 ft	Open Ditch	180 ft
24" RCP	157 ft	48" RCP	817 ft		

The total length of new tile shall be 1,524 feet. The 840 feet of original drain between Sta. 36+10 and Sta. 44+50 shall be vacated. This proposal will add an additional 684 feet to the drains total length.

The pipe sections of the new drain shall be those lengths between structures 705 to 706; 706 to 707; 707 to 708; 708 to 709; 720 to 721; 721 to 722; 722 to 723; 723 to 724; and 724 to 725. An arm will be constructed and will be part of the Johnson Drain from Structure 735 to 736 and 736 to 737.

The open ditch portion of the above listed line will be the straight line distance between Structures 720 and 709 and Structure 709 to 735 in Common Area "K".

The retention pond located in Common Area "K" is not to be considered part of the regulated drain for maintenances purposes, but only for conveyance. Only the inlet and outlet will be maintained as part of the regulated drain. The maintenance of the pond will be the responsibility of the Homeowners Association or the City of Noblesville. The Board will however, retain jurisdiction for ensuring the storage volume for which the lake was designed will be retained. Thereby, allowing no fill or easement encroachments.

The cost of the relocation is to be paid by Primrose Development. Because the project is to be paid by the petitioner and is within the boundaries of the petitioner's property, the project falls under the requirements as set out in IC 36-9-27-52.5. Therefore, a hearing is not required for the petition.

The petitioner will be providing the Performance Bonds upon approval by the Board.

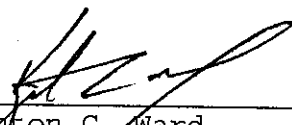
Lots within the subdivision shall be assessed at \$35.00, roads at \$10.00 per acre and common areas at \$5.00 per acre, with a \$35.00 minimum as set at hearing on April 23, 2001.

Parcels assessed for this drain may be assessed for the Sly Run Drain at sometime in the future.

I believe this proposed drain meets the requirements for Urban Drain Classification as set out in IC 36-9-27-67 to 69. Therefore, this drain shall be designated as an Urban Drain.

I recommend that upon approval of the above-proposed drain that the Board also approve the attached non-enforcement request. This request is for the reduction of the regulated drain easement to those easement widths as shown on the secondary plat Conner Crossing of Noblesville, Brookstone Phase I as recorded in the office of the Hamilton County Recorder.

I recommend approval by the Board at this time.



Kenton C. Ward
Hamilton County Surveyor

KCW/llm

HAMILTON COUNTY DRAINAGE BOARD
NOBLESVILLE, INDIANA

IN RE: Conner Crossing of Noblesville: Brookston)
Phase One)
Hamilton County, Indiana)

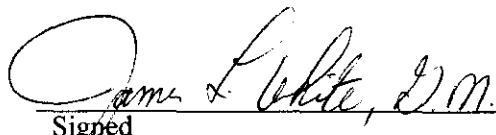
PETITION FOR RELOCATION RECONSTRUCTION

Primrose Development LLC (hereinafter "Petitioner"),

Hereby petitions the Hamilton County Drainage Board for authority to relocate and improve a section of the Bliss Johnson Drain, and in support of said petition advises the Board that:

1. Petitioner owns real estate through which a portion of the Bliss Johnson Drain runs.
2. Petitioner plans to develop its real estate with ponds, building, utilities, storm drains, sanitary sewers and other structures.
3. Petitioner's proposed development of its real estate will require relocation and reconstruction of a portion of the Bliss Johnson Drain, as specifically shown on engineering plans and specifications filed with the Hamilton County Surveyor.
4. The work necessary for the proposed relocation and reconstruction will be undertaken at the sole expense of the Petitioner and such work will result in substantial improvement to the Bliss Johnson Drain, without cost to other property owners on the watershed of the Bliss Johnson Drain.
5. Proposed relocation and reconstruction will not adversely affect other land owners within the drainage shed.
6. Petitioner requests approval of the proposed relocation and reconstruction under IC36-9-27-52.5.

WHEREFORE, Petitioner requests that an Order issued from the Hamilton County Drainage Board authorizing relocation and reconstruction of the Bliss Johnson Drain, in conformance with applicable law and plans and specifications on file with the Hamilton County Surveyor.


Signed _____
James White - General Manager
Printed _____

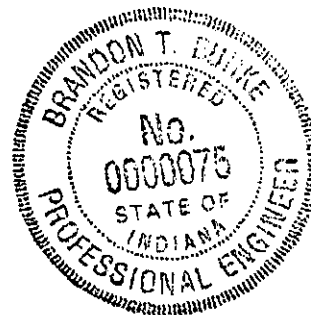
ENGINEERS ESTIMATE

PROJECT: Corner Crossing of Noblesville **DATE:** September 16, 2002
Reconstruction of the Bliss Johnson Legal Drain
LOCATION: Hamilton County **ITEM:** SUMMARY **JOB #:** 3659-001

DESCRIPTION	QUANTITY	UNIT	UNIT PRICE	TOTAL
Brookston Phase One				
STORM				\$118,779.10
EROSION CONTROL				\$2,178.00
Cottage Grove Phase One				
STORM				\$76,182.70
EROSION CONTROL				\$1,072.50
Phase One Entry				
STORM				\$91,696.00
EROSION CONTROL				\$1,712.70
T O T A L				\$291,621.00

I certify that this estimate was prepared under my supervision and that it represents an estimate of costs for materials and labor to make the improvements shown on the construction plans and is based on standard methods of estimating such costs effective at the time the estimate was prepared.

By: Brandon T. Burke 11-7-02
 Brandon T. Burke, P.E.
 The Schneider Corporation
 12821 E. New Market Street, Suite 100
 Carmel, IN 46033



|::

CERTIFICATE OF COMPLETION AND COMPLIANCE

TO: HAMILTON COUNTY SURVEYOR
RE: Conner Crossing of Noblesville – Brookston Phase One Legal Drain

I hereby certify that:

1. I am a Register Engineer in the State of Indiana
2. I am familiar with the plans and specifications for the above referenced subdivision.
3. I have personally observed and supervised the completion of the Drainage Facilities for the above referenced subdivision, and
4. To the best of my knowledge, information and belief, the Drainage Facilities within the subdivision has been installed and completed in conformity with all plans and specifications.

Signature:  Date: 7-28-04

Type or print name: Brandon T Burke, P.E.

Business /Address: The Schneider Corporation

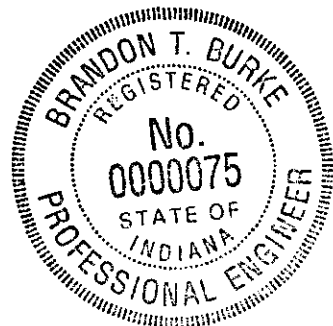
12821 E. New Market Street, Suite 100, Carmel, IN 46032

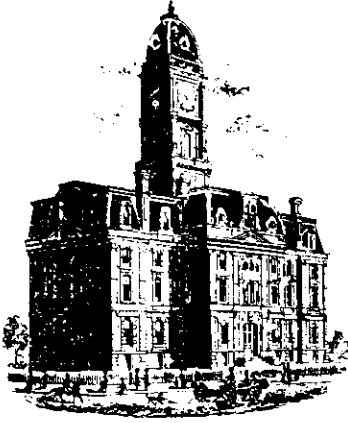
Telephone: (317) 569-8112

INDIANA REGISTRATION NUMBER

PE 1000075

SEAL





SURVEYOR'S OFFICE

Hamilton County

Kenton C. Ward, Surveyor

Phone (317) 776-8495

Fax (317) 776-9628

Suite 188

One Hamilton County Square

Noblesville, Indiana 46060-2230

To: Hamilton County Drainage Board

June 1, 2006

Re: Bliss Johnson Drain: Brookstone Phase I Relocation

Attached are as-builts, certificate of completion & compliance, and other information for Brookstone Phase I Relocation. An inspection of the drainage facilities for this section has been made and the facilities were found to be complete and acceptable.

During construction, changes were made to the drain, which will alter the plans submitted with my report for this drain-dated February 20, 2003. The report was approved by the Board at the hearing held March 24, 2003. (See Drainage Board Minutes Book 7, Pages 16-17)

The changes are as follows:

Structure:	Length:	Size	Material:	Up Invert:	Dn Invert	Grade:	Changes(ft):
709-708	34	48	RCP	827.05	826.94	0.32	2
708-707	140	48	RCP	826.94	826.81	0.09	-1
707-706	76	48	RCP	826.81	826.52	0.38	2
706-705	170	48	RCP	826.52	826.06	0.27	-4
725-724	147	24	RCP	828.11	827.86	0.17	2
724-723	122	24	RCP	827.86	827.63	0.19	-3
723-722	72	24	RCP	827.63	827.34	0.4	
722-721	151	24	RCP	827.34	827.07	0.18	-1
721-720	28	27	RCP	826.95	826.88	0.25	-5
737-736	122	48	RCP	827.3	827.2	0.08	5
736-735	171	48	RCP	827.2	827.05	0.09	-13

RCP Pipe Totals:	
24	492
27	28
48	713
Total:	1233

Other Drain:	
Open	203
Total:	203

The length of the drain due to the changes described above is now **1436 feet**.

The non-enforcement was approved by the Board at its meeting on March 24, 2003 and recorded under instrument #200400083086.

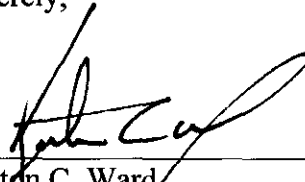
The following sureties were guaranteed by Bond Safeguard Insurance Company and released by the Board on its November 8, 2004 meeting and September 26, 2005 meeting.

Bond-LC No: 5006806
Insured For: Reconstruction
Amount: \$291,621.00
Issue Date: November 21, 2003

Bond-LC No: 5012784
Insured For: Drains & outfall str.
Amount: \$25,551.00
Issue Date: October 8, 2004

I recommend the Board approve the drain's construction as complete and acceptable.

Sincerely,



Kenton C. Ward,
Hamilton County Surveyor

KCW/slm

SEC. 28 & 33-T19N-R4E

CONNER CROSSING OF NOBLESVILLE

BROOKSTON PHASE ONE

(CONSTRUCTION PLANS)

HAMILTON COUNTY NOBLESVILLE, INDIANA

DEVELOPER:

ZONING: R1/PD

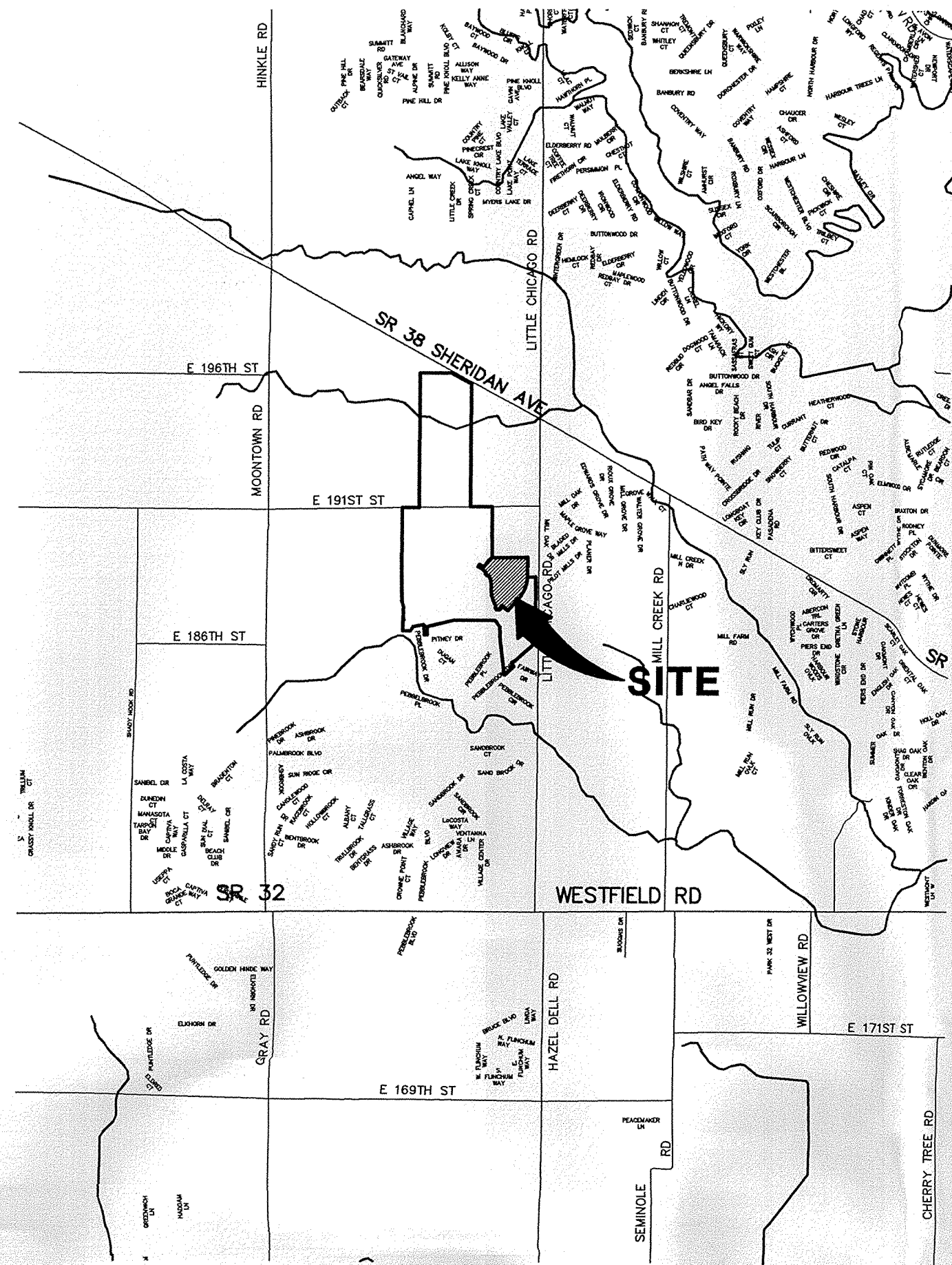
PRIMROSE DEVELOPMENT, L.L.C.

1016 3RD. AVENUE, SW SUITE 100

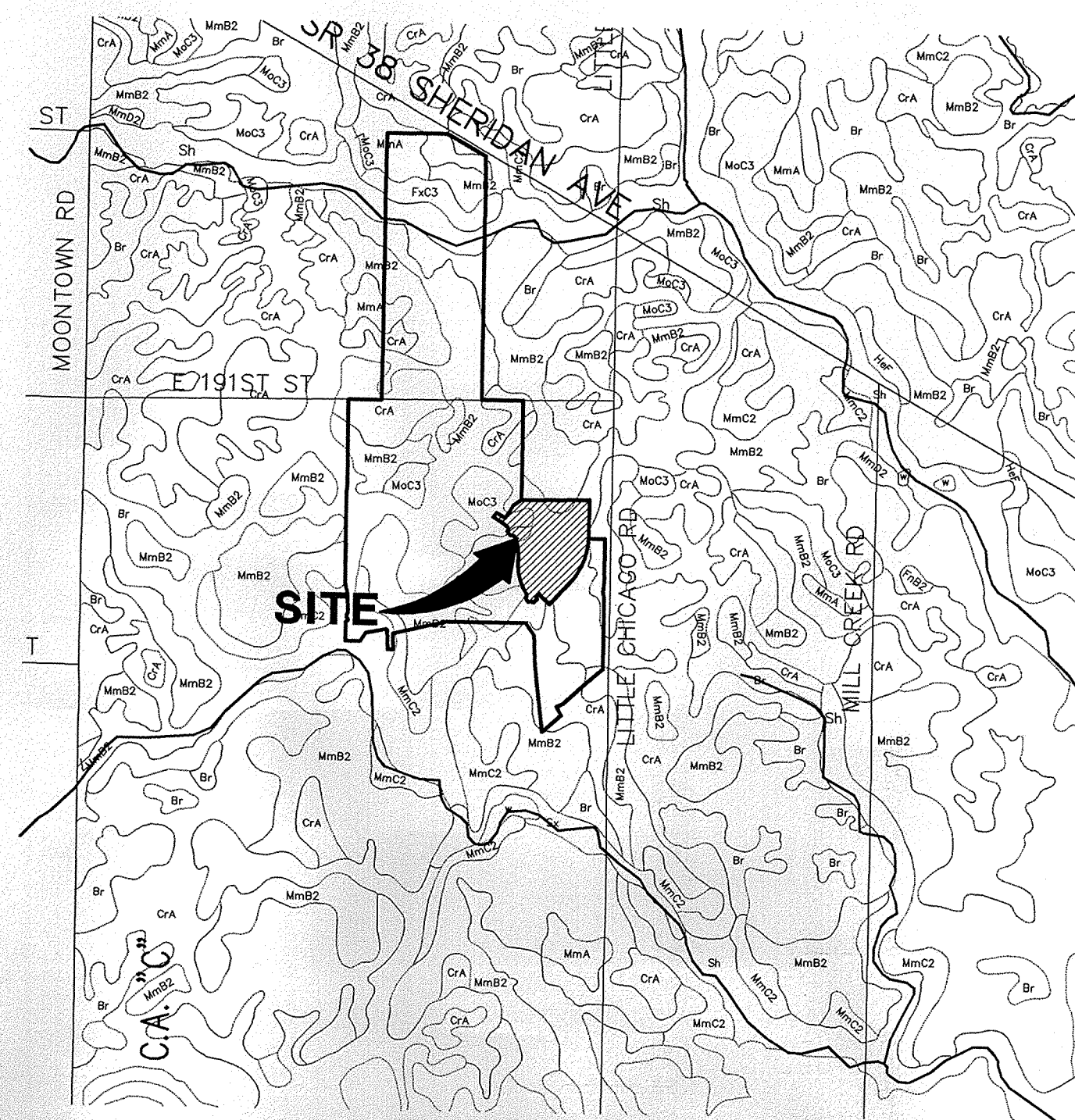
CARMEL, INDIANA 46032

(317) 846-6641

CONTACT: JIM WHITE

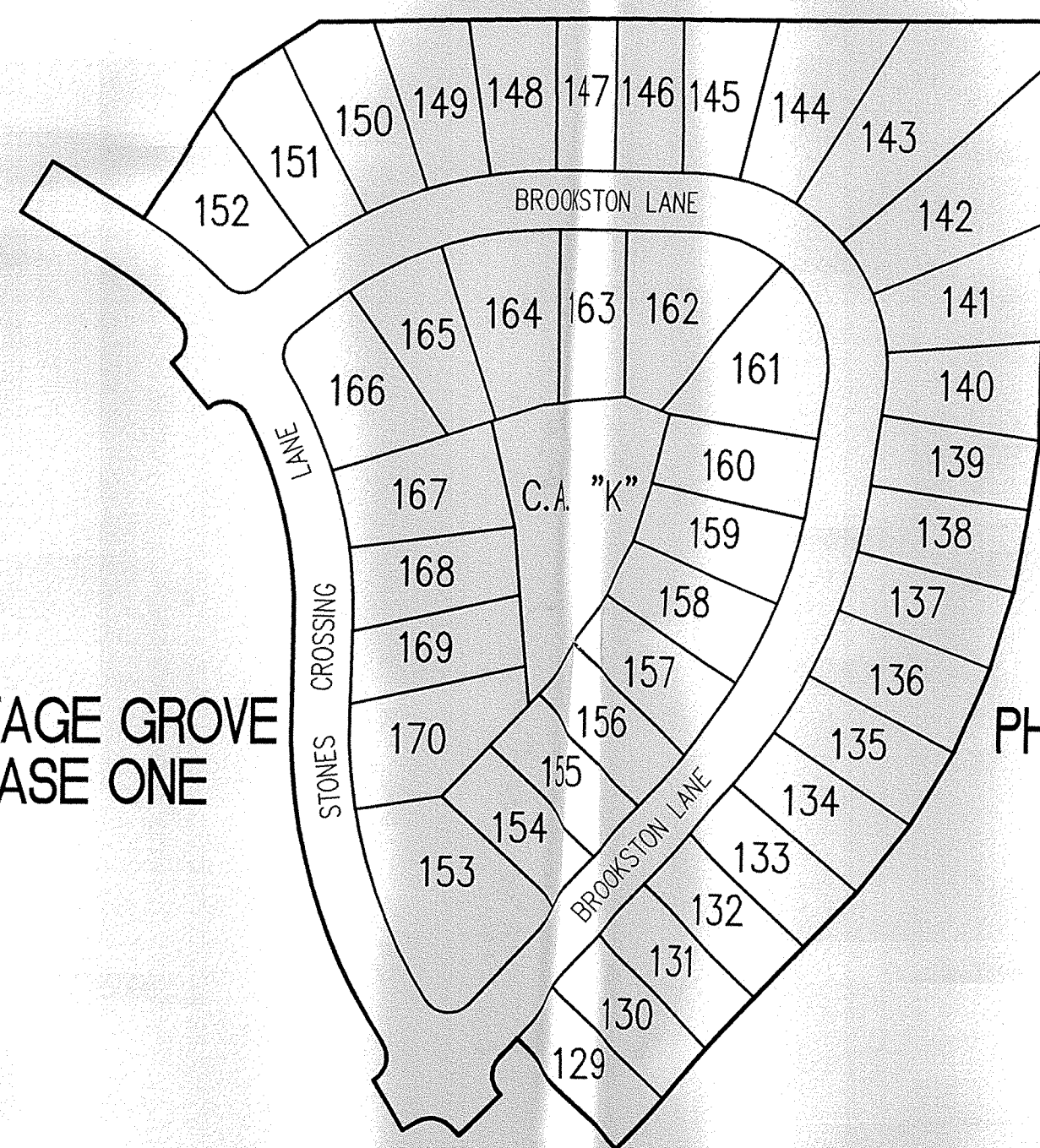


AREA MAP
NOT TO SCALE



SOILS MAP
NOT TO SCALE

SOIL LEGEND
NAME
Symbol
Br Brookston silty clay loam
C/A Crosby silt loam



SITE MAP
SCALE: 1"=150'

**SUB-SURFACE DRAINAGE
SANITARY SEWER
STORM SEWER
WATERMAIN
RECORD DRAWING**

STORM STRUCTURE TABLE			
Structure#	Structure Type	Neenah Casting Type	East Jordan Casting Type
693	Storm Manhole Type K	R-1772-C	1022-2
698	Catch Basin Type A	R-3501-TR	7495M1
699	Inlet Type A	R-3501-TL	7495M2
700	Catch Basin Type A	R-3501-TR	7495M1
701	Inlet Type A	R-3501-TL	7495M2
702	Catch Basin Type A	R-3501-TR	7495M2
703	Inlet Type A	R-3501-TR	7495M1
705	Concrete End Section	N.A.	N.A.
706	Storm Manhole Type K	R-1772-C	1022-2
707	Storm Manhole Type K	R-1772-C	1022-2
708	Storm Manhole Type K	R-1772-C	1022-2
709	Concrete End Section	N.A.	N.A.
710	Catch Basin Type A	R-3501-TR	7495M1
711	Inlet Type A	R-3501-TL	7495M2
712	Catch Basin Type A	R-4342	6489
715	Concrete End Section	N.A.	N.A.
716	Catch Basin Type A	R-4342	6489
717	Inlet Type A	R-4342	6489
720	Concrete End Section	N.A.	N.A.
721	Storm Manhole Type C	R-1772-C	1022-2
722	Storm Manhole Type C	R-1772-C	1022-2
723	Storm Manhole Type C	R-1772-C	1022-2
724	Storm Manhole Type C	R-4342	6489
725	Catch Basin Type A	R-4342	6489
727	Catch Basin Type A	R-3501-TL	7495M2
728	Inlet Type A	R-3501-TL	7495M1
730	Catch Basin Type A	R-3501-TL	7495M2
731	Inlet Type A	R-3501-TR	7495M1
735	Concrete End Section	N.A.	N.A.
736	Storm Manhole Type K	R-1772-C	1022-2
737	Concrete End Section	N.A.	N.A.
710	Catch Basin Type A	R-3501-TR	7495M1
711	Inlet Type A	R-3501-TL	7495M2

INDEX	
SHEET No.	DESCRIPTION
C100	COVER SHEET
C101	DEVELOPMENT PLAN
C102	EROSION CONTROL PLAN
C201-C203	STREET PLAN AND PROFILE
C301	INTERSECTION DETAILS
C302	TRAFFIC CONTROL AND SIGNAGE PLAN
C401-C402	SANITARY SEWER PLAN & PROFILE
C601-C603	STORM SEWER PLAN & PROFILE
C701	WATER DISTRIBUTION PLAN
C801-C811	NOBLESVILLE DETAILS
C812	GENERAL DETAILS
C813	EROSION CONTROL DETAILS

STREET SUMMARY		
Name	Lgth of Street (feet)	Length of Street (miles)
Stones Crossing Lane	1066	0.19
Brookston Lane	1623	0.31
Total	2689	0.50

SANITARY STRUCTURE TABLE			
Structure#	Structure Type	Neenah Casting Type	East Jordan Casting Type
404	Sanitary Manhole Type A	R-1772-C	1022-2
405	Sanitary Manhole Type A	R-1772-C	1022-2
406	Sanitary Manhole Type A	R-1772-C	1022-2
407	Sanitary Manhole Type A	R-1772-C	1022-2
408	Sanitary Manhole Type A	R-1772-C	1022-2
409	Sanitary Manhole Type A	R-1772-C	1022-2
420	Sanitary Manhole Type A	R-1772-C	1022-2
421	Sanitary Manhole Type A	R-1772-C	1022-2
422	Sanitary Manhole Type A	R-1772-C	1022-2
423	Sanitary Manhole Type A	R-1772-C	1022-2
424	Sanitary Manhole Type A	R-1772-C	1022-2
425	Sanitary Manhole Type A	R-1772-C	1022-2
426	Sanitary Manhole Type A	R-1772-C	1022-2
427	Sanitary Manhole Type A	R-1772-C	1022-2



12821 E. New Market Street
Suite 100
Carmel, IN 46032
Telephone: 317.569.8112
Fax: 317.826.6410
www.schneidercorp.com

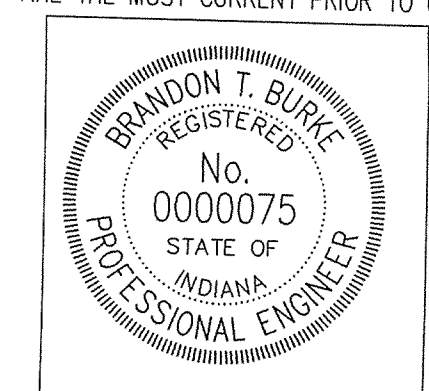
Architecture
Civil Engineering
Environmental Engineering
Geotechnical Services
GIS * LIS
Home Builder Services
Interior Design
Land Surveying
Landscape Architecture
Transportation Engineering

Brandon T. Burke

CERTIFIED BY: BRANDON T. BURKE

E-MAIL ADDRESS: bburke@schneidercorp.com

THESE DOCUMENTS ARE SUBJECT TO PERIODIC REVISIONS BY THE SCHNEIDER CORPORATION. THE HOLDER IS RESPONSIBLE FOR VERIFYING THAT THESE DOCUMENTS ARE THE MOST CURRENT PRIOR TO USE.



DATE:

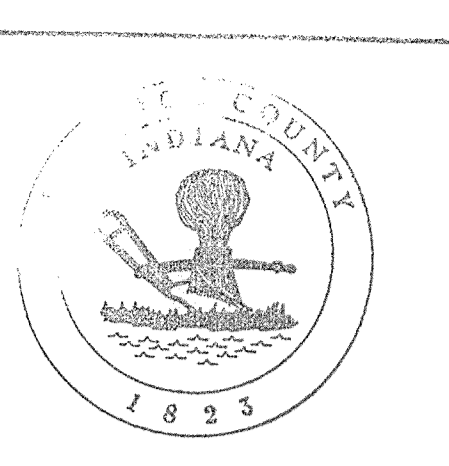
NOTE:
ANY TYPE "A" STORM STRUCTURE IN WHICH INCOMING OR OUTGOING PIPES ARE NOT PERPENDICULAR TO THE STRUCTURE SHALL BE INCREASED IN SIZE SO THAT THE CORNERS OF STRUCTURE ARE LEFT INTACT OR CHANGE TO A MANHOLE.

REVISIONS:		
DATE	BY	DESCRIPTION
08/14/02	BET	ALL SHEETS
08/03/02	BET	C101-C701
08/04/03	BET	C100-C102 & C601-C603
7/26/04	BET	"RECORD DRAWING"

PROJECT ENGINEER:

CHECKED BY: DATE CHECKED:

STRUCTURE DATA TABLE			
SIR. NO.	INVERT IN	INVERT OUT	
692	833.80	826.44 (48" NW)	826.44 (48" SE)
693	834.20	826.71 (48" NW)	826.71 (48" SE)
705		825.95 (48" NW)	
706	834.30	826.30 (48" NW)	826.30 (48" SE)
707	834.30	826.45 (48" NW)	826.45 (48" SE)
708	833.00	826.73 (48" NW)	826.73 (48" SE)
709		826.80 (48" SE)	
720		826.80 (27" N)	
721	833.00	826.86 (24" N)	826.86 (27" S)
722	833.70	827.17 (24" N)	827.17 (24" S)
723	833.60	827.31 (24" N)	827.31 (24" S)
724	833.30	827.56 (24" N)	827.56 (24" S)
725	831.80		827.85 (24" E)
735		826.80 (48" SW)	
736	834.70	826.98 (48" SW)	826.98 (48" NE)
737		827.10 (48" NE)	



UTILITIES - NOBLESVILLE

This information was gathered from the Hamilton County Geographic Information System. This document is considered an official record of the GIS.

Entry Date: **4-20-06**

Entered by: **SLM**

GAS
 Hamilton County Surveyor's Office
 100 S. Mill Creek Road
 Noblesville, IN 46060
 (317) 776-5300
 Attn: Mike Koozle

ELECTRIC
 Hamilton County Surveyor's Office
 100 S. Mill Creek Road
 Noblesville, IN 46060
 (317) 776-5300
 Attn: Mike Koozle

COUNTY REGULATED DRAINS
 Hamilton County Surveyor's Office
 100 S. Mill Creek Road
 Noblesville, IN 46060
 (317) 776-5300
 Attn: Mike Koozle

SANITARY SEWER
 City of Noblesville
 Hamilton County Surveyor's Office
 100 S. Mill Creek Road
 Noblesville, IN 46060
 (317) 776-5300
 Attn: Mike Koozle

WATER
 Indianapolis Water Company
 1220 Waterway Boulevard
 Indianapolis, IN 46206
 (317) 282-5000
 Attn: Mr. Stan Graves

TELEPHONE
 Verizon
 20000 Insignia Road
 Noblesville, IN 46060
 (317) 233-8243
 Attn: Steve Costlow

PIPELINES
 Pendergast Eastern Pipe Line
 637 Knoxville Road
 Noblesville, IN 46060
 (317) 233-8243
 Attn: Mr. Sharon Proff

Utility Hotline: within Indiana 1-800-382-5544
 outside Indiana 1-800-428-5200

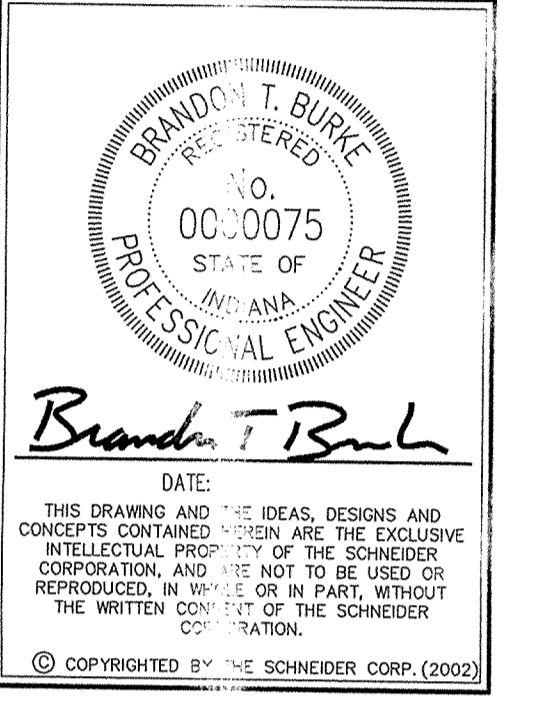
NOTE
 The size and location of utilities are per plans and locations provided by the respective utility companies. All utility companies shall be notified prior to any excavation for field location of services.

ASSUMED NORTH
 SCALE: 1"=50'

GENERAL NOTES

- ALL GRADES AT BOUNDARY SHALL MEET EXISTING GRADES.
- IT SHALL BE THE RESPONSIBILITY OF EACH CONTRACTOR TO VERIFY ALL EXISTING UTILITIES AND CONDITIONS PERTAINING TO HIS PHASE OF WORK. IT SHALL ALSO BE THE CONTRACTOR'S RESPONSIBILITY TO CONTACT THE OWNERS OF THE VARIOUS UTILITIES FOR PROPER STAKE LOCATIONS FOR EACH UTILITY BEFORE WORK IS STARTED. THE CONTRACTOR SHALL NOTIFY IN WRITING THE OWNER OR THE ENGINEER OF ANY CHANGES, OMISSIONS, OR ERRORS FOUND ON THESE PLANS OR IN THE FIELD BEFORE WORK IS STARTED OR RESUMED.
- STANDARD SPECIFICATIONS FOR THE CITY OF NOBLESVILLE, INDIANA SHALL APPLY FOR ALL SANITARY SEWER AND STORM SEWERS.
- ANY PART OF THE SANITARY OR STORM SEWER TRENCHES RUNNING UNDER PAVED AREAS TO BE BACKFILLED WITH GRANULAR MATERIAL.
- THE SIZE AND LOCATION OF EXISTING UTILITIES SHOWN ARE FOR INFORMATION PROVIDED BY THE RESPECTIVE UTILITY COMPANIES. ALL UTILITY COMPANIES SHOULD BE NOTIFIED PRIOR TO ANY EXCAVATION FOR FIELD LOCATION OF SERVICES.
- SERVICE WALKS SHALL BE NON-REINFORCED CONCRETE 4" THICK AND 4' IN WIDTH.
- 4" CONCRETE SERVICE WALK ACROSS FRONTAGE OF EACH LOT TO BE CONSTRUCTED BY OTHERS.
- EXPANSION JOINTS AREA TO BE PLACED AT ALL WALK INTERSECTIONS AND BETWEEN WALKS AND PLATFORMS. SIDEWALK SCORES ARE TO BE EQUALLY SPACED BETWEEN EXPANSION JOINTS, CONSTRUCTION JOINTS AND PERPENDICULAR TO SIDEWALKS AT 5' INTERVALS OR LESS WITH A CONSTRUCTION JOINT EVERY 20' OR LESS.
- TEMPORARY TRAFFIC CONTROL DURING CONSTRUCTION TO CONFORM TO APPLICABLE LOCAL AND STATE STANDARDS. ALL CONSTRUCTION ACTIVITY ON THIS SITE TO BE PERFORMED IN COMPLIANCE WITH APPLICABLE O.S.H.A. STANDARDS FOR WORKER SAFETY.
- CONTRACTOR SHALL MINIMIZE DAMAGE TO EXISTING TREES. REMOVE AND BACKFILL ALL AREAS WHERE ANY FIELD TILE OR REGULATED DRAIN CROSSES PROPOSED USE PADS OR RIGHT-OF-WAYS. ALL FIELD TILES INTERCEPTED TO BE PERPETUATED INTO STORM SEWER SYSTEM OR LAKE. THE SUBCONTRACTOR SHALL NOTIFY IN WRITING THE OWNER AND THE ENGINEER IN ANY CIRCUMSTANCES WHERE THIS CANNOT BE ACCOMPLISHED.
- ALL FILL AREAS SHALL BE COMPACTED TO AT LEAST 95 PERCENT OF THE MAXIMUM DRY DENSITY (ASTM D-1557). FILL UNDER THE FOOTING SHALL BE COMPACTED TO AT LEAST 95 PERCENT OF THE MAXIMUM DRY DENSITY (ASTM D-1557).
- DEVELOPER SHALL CONFORM TO MONUMENTATION STANDARDS OF THE CITY OF NOBLESVILLE AS GRAPHICALLY DEFINED OF THE SECONDARY PLAT AND SPECIFIED UNDER THE "MONUMENTATION GUIDELINES", SEE SHEET C808.

REVISIONS:
 1. SET 08/14/02, REVISED PER THE COMMENTS.
 2. SET 08/14/02, REVISED PER THE COMMENTS.
 3. SET 08/14/02, REVISED PER THE COMMENTS.
 4. SET 11/27/04, REVISED PER CITY OF NOBLESVILLE COMMENTS.
 5. SET 11/27/04, REVISED PER CITY OF NOBLESVILLE COMMENTS.
 6. SET 11/27/04, REVISED PER CITY OF NOBLESVILLE COMMENTS.



Schneider

THE SCHNEIDER CORPORATION
 12821 E. New Market Street
 Suite 100
 Carmel, IN 46032
 Telephone: 317.569.8112
 Fax: 317.826.5410
 www.schneidercorp.com

Architecture
 Civil Engineering
 Environmental Engineering
 Geotechnical Services
 GIS + LIS
 Home Builder Services
 Interior Design
 Land Surveying
 Landscape Architecture
 Transportation Engineering

CONNER CROSSING OF NOBLESVILLE BROOKSTON PHASE ONE,

NOBLESVILLE, INDIANA

PRIMROSE DEVELOPMENT, L.L.C.
 CARMEL, INDIANA

DATE: 6/26/02	PROJECT NO.: 3659.004
DRAWN BY: BET	CHECKED BY:
SHEET TITLE: DEVELOPMENT PLAN	
DRAWING FILES: N:\3659\004\DWG\2101.DWG	
XREF: CA-1-BSD.DWG	
XREF: CO-1-1-BSD.DWG	
XREF: FBN-1-BSD.DWG	
XREF: BR-1-BSD.DWG	
XREF: 3659001.DWG	
XREF: FUTR-BSD.DWG	
SHEET NO.:	

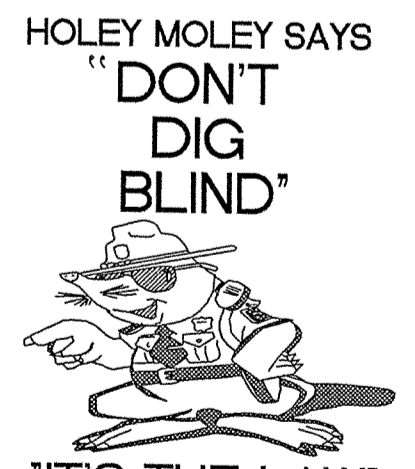


**SUB-SURFACE DRAINAGE
 SANITARY SEWER
 STORM SEWER
 RECORD DRAWING**

INTERCEPT BLISS
 JOHNSON LEGAL
 DRAIN-SEE NOTE 12.

NOTE: FIELD VERIFY LEGAL DRAIN LOCATION AND ELEVATION PRIOR TO CONSTRUCTION OF STRUCTURES 720-725. NOTIFY ENGINEER IMMEDIATELY IF ELEVATION IS LOWER THAN PLAN.

- LEGEND**
- Existing Storm Sewer
 - New Storm Sewer
 - Existing Sanitary Sewer
 - New Sanitary Sewer
 - Existing Contour
 - Existing Elevation
 - New Pavement Grade
 - All Other Finish Grades
 - Match Existing Grades
 - Corrected Grades
 - Storm Structure Number
 - Sanitary Structure Number
 - No Pad Construction: Denotes Approximate Pad Size and Minimum Pad Elevation.
 - Flow Arrow
 - 6" Subsurface Drain Swale (R)
 - Existing Trees
 - Existing Gas Main
 - Existing Telephone
 - Existing Water Main
 - Existing Flowline
 - Existing Overhead Utilities
 - Emergency Overflow Route
 - Construction Fence-Tree Preservation Area



HOLEY MOLEY SAYS
"DON'T DIG BLIND"

"IT'S THE LAW"
 CALL 2 WORKING DAYS BEFORE YOU DIG
 1-800-382-5544
 CALL TOLL FREE
 PER INDIANA STATE LAW IS-69-1991.
 IT IS AGAINST THE LAW TO EXCAVATE WITHOUT NOTIFYING THE UNDERGROUND LOCATION SERVICE TWO (2) WORKING DAYS BEFORE COMMENCING WORK.

BENCHMARK

BW #1 - In Hamilton County about 1.4 miles south of Westfield, 1.4 miles south along "old" U.S. Highway 31 from its intersection with State Road 32 in Westfield to an east-west cross road, at a 1.5 foot pipe culvert under the road, in the northeast quarter of the intersection, set in the top of the east concrete headwall of the culvert, 23 feet north of the center line of the east-west road, 15 feet east of the center line of the north-south road, 60 feet north of the south face of the headwall, a chiseled triangle Elevation = 845.033 (NGVD 1929)

BW #2 - In Hamilton County about 1.4 miles south of Westfield, 1.4 miles south along "old" U.S. Highway 31 from its intersection with State Road 32 in Westfield to an east-west cross road, thence 0.1 mile west to the center line of the north-south road, 2.9 feet above the roadway, 1.4 feet east of the bronze benchmark tablet, a Standard Indiana Flood Control and Water Resources Commission Elevation = 846.716

HOLEY MOLEY SAYS
"DON'T DIG BLIND"



"IT'S THE LAW"
 CALL 2 WORKING DAYS BEFORE YOU DIG
1-800-382-5544

CALL TOLL FREE
 PER INDIANA STATE LAW IS-69-1991,
 IT IS AGAINST THE LAW TO EXCAVATE
 WITHOUT NOTIFYING THE UNDERGROUND
 LOCATION SERVICE TWO (2) WORKING
 DAYS BEFORE COMMENCING WORK.

GENERAL NOTES

- TEMPORARY TRAFFIC CONTROL DURING CONSTRUCTION TO CONFORM TO APPLICABLE LOCAL AND STATE STANDARDS.
- ALL CONSTRUCTION ACTIVITY ON THIS SITE TO BE PERFORMED IN COMPLIANCE WITH APPLICABLE O.S.H.A. STANDARDS FOR WORKER SAFETY.
- IT SHALL BE THE CONTRACTORS RESPONSIBILITY TO FIELD VERIFY ALL UTILITY LOCATIONS BEFORE CONSTRUCTION BEGINS.
- CONTRACTORS SHALL MINIMIZE DAMAGE TO EXISTING TREES.

LEGEND/DETAILS

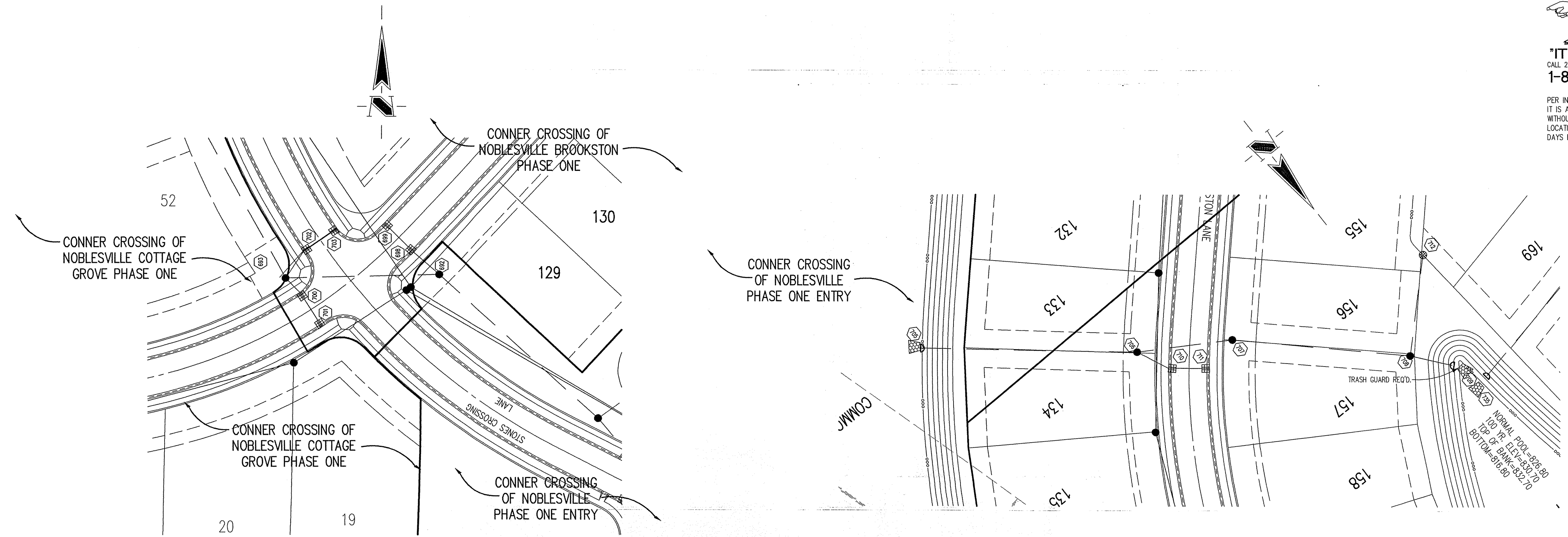
Sheet	Detail	Description
C804		Bedding Detail - Reinforced Concrete Pipe (RCP)
C805		Roll Curb Inlet Detail
C805		Beehive Inlet Detail
C805		Storm Manhole Detail
C812		Precast Concrete End Section
C812		RipRap Detail @ End Section

BENCHMARK

BM #1 - In Hamilton County, about 1.4 miles south of Westfield, 1.4 miles south along "old" U.S. Highway 31 from its intersection with State Road 32 in Westfield to an east-west cross road, at a 1.5 foot pipe culvert under the road, in the northeast quarter of the intersection, set in the top of the east concrete headwall of the culvert, 23 feet north of the center line of the east-west road, 15 feet east of the center line of the north-south road, 601 feet north of the south face of the headwall, a chiseled bronze Elevation = 845.033 (NGVD 1929)

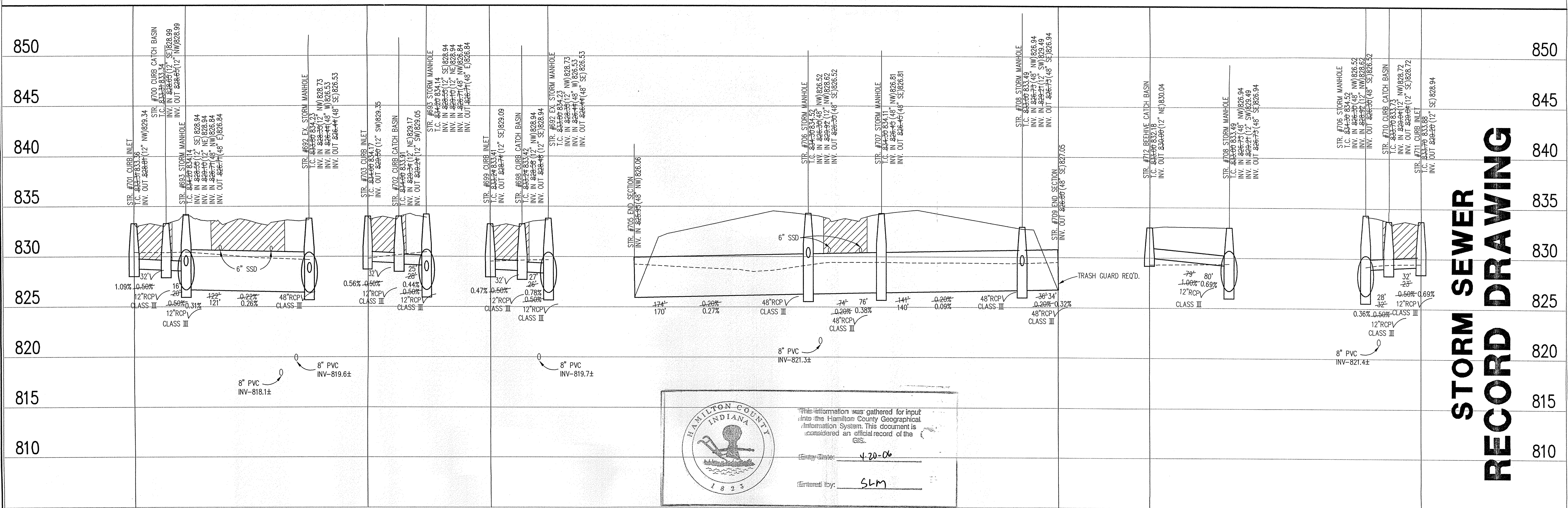

BM #2 - In Hamilton County, about 1.4 miles south of Westfield, 1.4 miles south along "old" U.S. Highway 31 from its intersection with State Road 32 in Westfield to an east-west cross road, thence 0.1 mile east to a concrete bridge over Cool Creek, set in the top of the north abutment of the bridge, 11 feet north of the center line of the road, 2.9 feet above the roadway, 1.4 feet east of the west face of the north guardrail, a Standard Indian Flood Control and Water Resources Commission bronze benchmark tablet, stamped "HAM 16 1959" (Note: bronze disk gone)
 Elevation = 846.716

NOTE:
 ANY TYPE "A" STORM STRUCTURE IN WHICH INCOMING OR OUTGOING PIPES ARE NOT PERPENDICULAR TO THE STRUCTURE SHALL BE INCREASED IN SIZE SO THAT THE CORNERS OF STRUCTURE ARE LEFT INTACT OR CHANGE TO A MANHOLE.



STORM SEWER PLAN

SCALE: 1"=50'

This information was gathered for input into the Hamilton County Geographical Information System. This document is considered an official record of the GIS.

Entry Date: 4-20-06
 Entered by: SLM

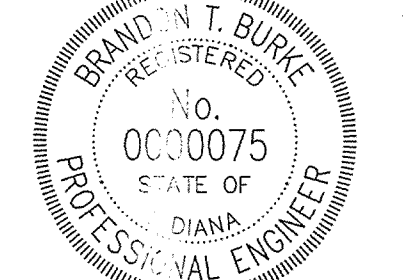
STORM SEWER PROFILE

LEGEND

	Existing Grade
	New Grade
	Granular Backfill


SCALE: HORZ.: 1"=50'
 VERT.: 1"=5'

REVISIONS:
 1. BET. 05/14/02 REVISED PER TAC COMMENTS.
 2. BET. 05/14/02 REVISED PER CITY OF NOBLESVILLE COMMENTS.
 3. BET. 05/14/02 REVISED PER CITY OF NOBLESVILLE COMMENTS.
 4. BET. 7/29/04, "RECORD DRAWING"



Brandon T. Burk
 REGISTERED PROFESSIONAL ENGINEER
 STATE OF INDIANA
 No. 0000075

DATE: _____
 THIS DRAWING AND THE IDEAS, DESIGNS AND CONCEPTS CONTAINED HEREIN ARE THE EXCLUSIVE INTELLECTUAL PROPERTY OF THE SCHNEIDER CORPORATION, AND ARE NOT TO BE USED OR REPRODUCED, IN WHOLE OR IN PART, WITHOUT THE WRITTEN CONSENT OF THE SCHNEIDER CORPORATION.
 © COPYRIGHTED BY THE SCHNEIDER CORP. (2002)



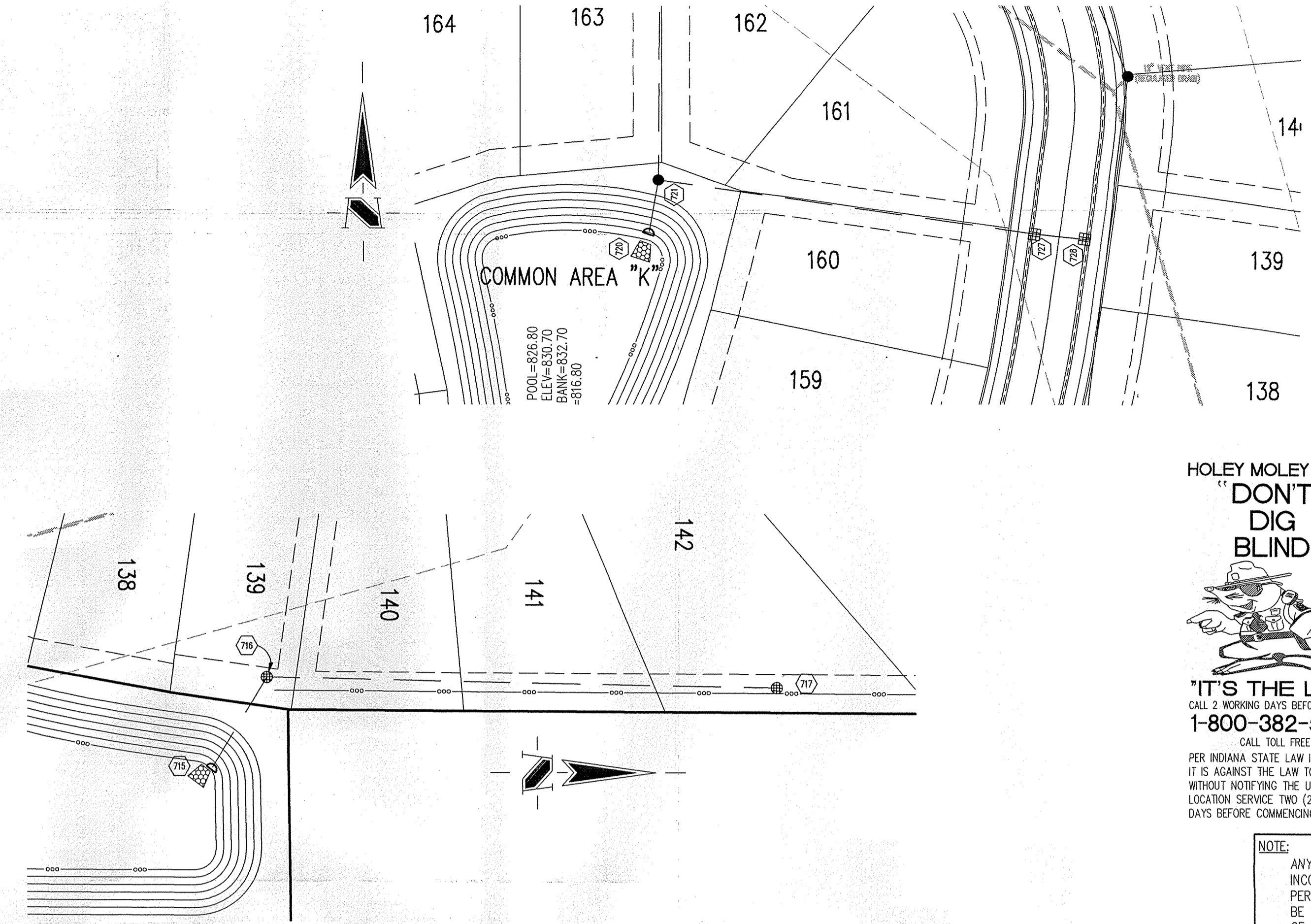
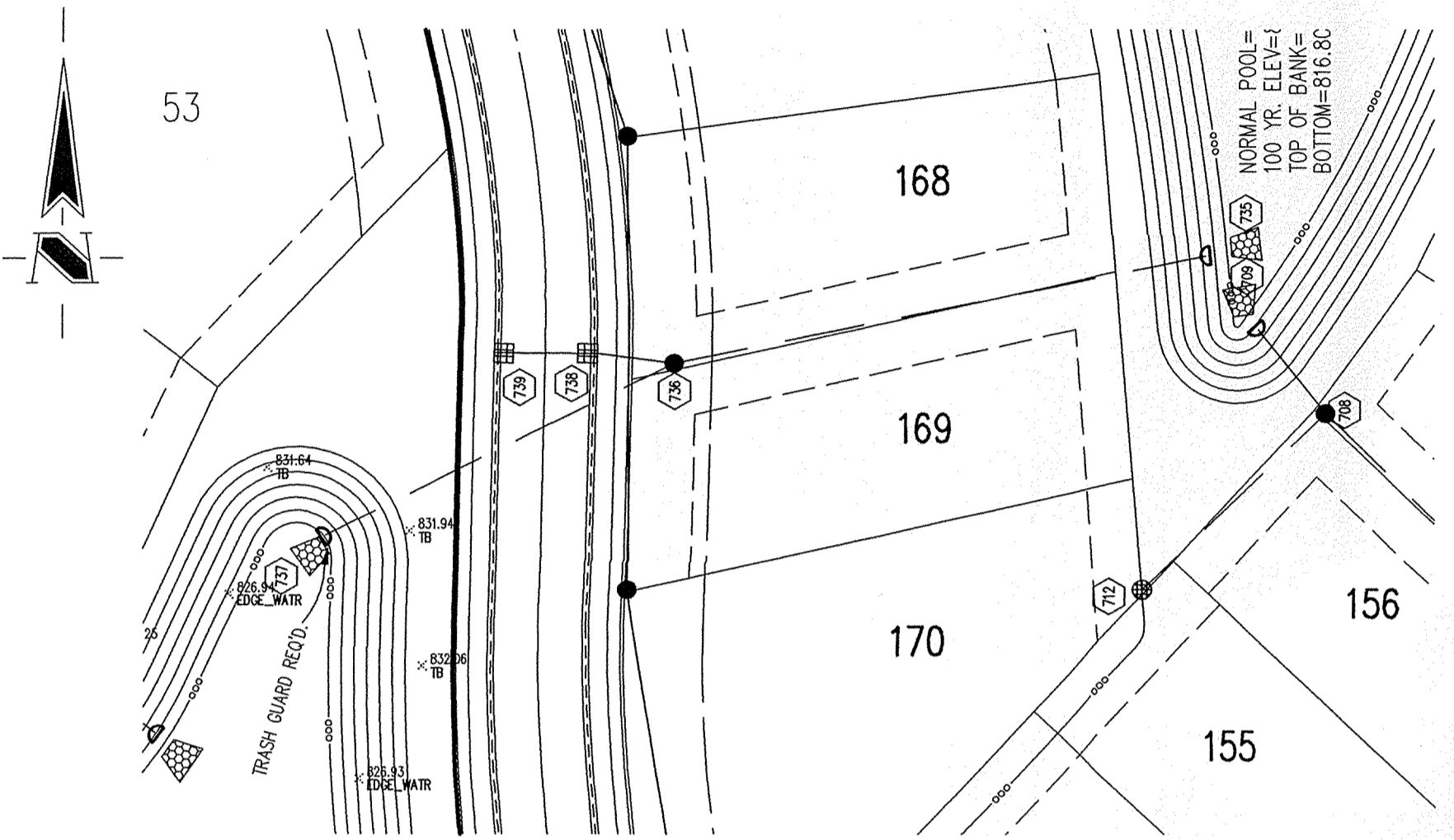
Schneider

THE SCHNEIDER CORPORATION
 12821 E. New Market Street
 Suite 100
 Carmel, IN 46032
 Telephone: 317.569.8112
 Fax: 317.826.5410
 www.schneidercorp.com

Architecture
 Civil Engineering
 Environmental Engineering
 Geotechnical Services
 GIS * LIS
 Home Builder Services
 Interior Design
 Land Surveying
 Landscape Architecture
 Transportation Engineering

**CONNER CROSSING OF NOBLESVILLE
 BROOKSTON PHASE ONE**
 NOBLESVILLE, INDIANA
 PRIMROSE DEVELOPMENT, L.L.C.
 CARMEL, INDIANA

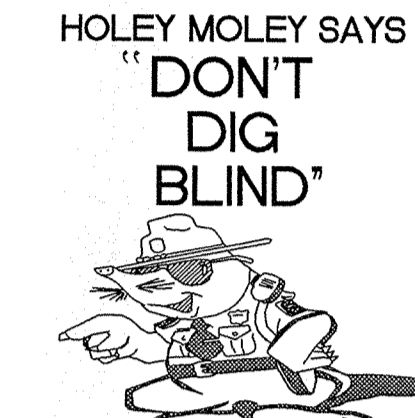
DATE: 6/26/02 PROJECT NO.: 3659.004
 DRAWN BY: DCC CHECKED BY:
 SHEET TITLE: STORM SEWER PLAN & PROFILE
 DRAWING FILES:
 N:\3659\004\DWG\C601-603.DWG
 XREF: CA-1-BS.DWG
 XREF: COT-1-BS.DWG
 XREF: FIB-1-BS.DWG
 XREF: BRK-1-BS.DWG
 XREF: 365900S.DWG
 XREF: FUTR-BS.DWG
 XREF: 004-STW.DWG
 SHEET NO.: **C601**



GENERAL NOTES

1. TEMPORARY TRAFFIC CONTROL DURING CONSTRUCTION TO CONFORM TO APPLICABLE LOCAL AND STATE STANDARDS.
2. ALL CONSTRUCTION ACTIVITY ON THIS SITE TO BE PERFORMED IN COMPLIANCE WITH APPLICABLE O.S.H.A. STANDARDS FOR WORKER SAFETY.
3. IT SHALL BE THE CONTRACTORS RESPONSIBILITY TO FIELD VERIFY ALL UTILITY LOCATIONS BEFORE CONSTRUCTION BEGINS.
4. CONTRACTORS SHALL MINIMIZE DAMAGE TO EXISTING TREES.

Sheet	Detail	Description
C804		Bedding Detail - Reinforced Concrete Pipe (RCP)
C805		Roll Curb Inlet Detail
C805		Beehive Inlet Detail
C805		Storm Manhole Detail
C812		Precast Concrete End Section
C812		RipRap Detail @ End Section



"IT'S THE LAW"
CALL 2 WORKING DAYS BEFORE YOU DIG
1-800-382-5544
CALL TOLL FREE

PER INDIANA STATE LAW IS-69-1991, IT IS AGAINST THE LAW TO EXCAVATE WITHOUT NOTIFYING THE UNDERGROUND LOCATION SERVICE TWO (2) WORKING DAYS BEFORE COMMENCING WORK.

BENCHMARK

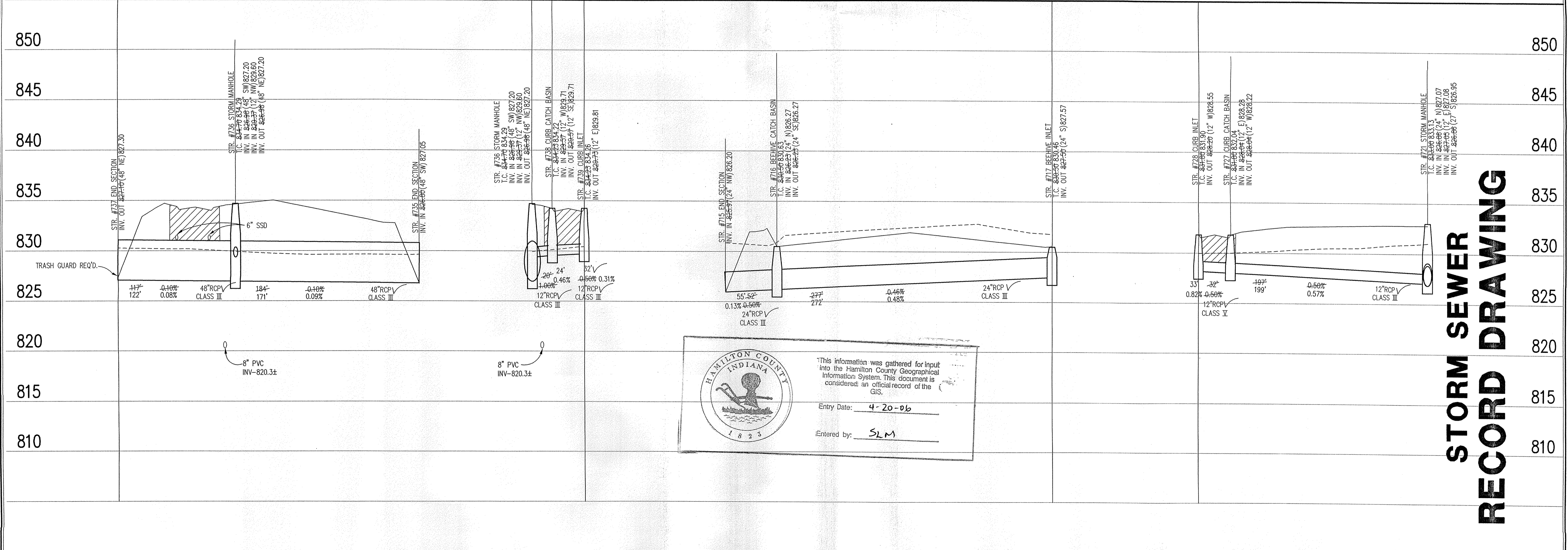
BM #1 - In Hamilton County about 1.4 miles south of Westfield, 1.4 miles south along "old" U.S. Highway 31 from its intersection with State Road 32 in Westfield to an east-west cross road, at a 1.5 foot pipe culvert under the road, in 1st northeast quarter of the intersection, set in the top of the east concrete headwall of the culvert, 23 feet north of the center line of the east-west road, 15 feet east of the center line of the north-south road, 601 feet north of the south face of the headwall, a chiseled bronze benchmark (Elevation = 845.033 (NGVD 1929))

BM #2 - In Hamilton County about 1.4 miles south of Westfield, 1.4 miles south along "old" U.S. Highway 31 from its intersection with State Road 32 in Westfield to an east-west cross road, then 0.1 mile east to a concrete bridge over Cool Creek, set in the top of the west end of the north girder of the bridge, 11 feet north of the center line of the road, 2.9 feet above the roadway, 1.4 feet east of the west face of the north girder, a Standard Indiana Flood Control and Water Resources Commission bronze benchmark (Elevation = 846.716)

NOTE:
ANY TYPE "A" STORM STRUCTURE IN WHICH INCOMING OR OUTGOING PIPES ARE NOT PERPENDICULAR TO THE STRUCTURE SHALL BE INCREASED IN SIZE SO THAT THE CORNERS OF STRUCTURE ARE LEFT INTACT OR CHANGE TO A MANHOLE.

STORM SEWER PLAN

SCALE: 1"=50'



HAMILTON COUNTY INDIANA
This information was gathered for input into the Hamilton County Geographical Information System. This document is considered an official record of the GIS.
Entry Date: 4-20-06
Entered by: SLM

LEGEND

	Existing Grade
	New Grade
	Granular Backfill

SCALE: HORZ.: 1"=50'
VERT.: 1"=5'

REVISIONS:
1. BET. 09/04/02, REVISED.
2. BET. 09/04/02, REVISED.
3. BET. 09/04/02, REVISED PER CITY OF NOBLESVILLE COMMENTS.
4. BET. 7/20/04, RECORD DRAWING

BRANDON T. BUNKER
REGISTERED
No. 0030075
STATE OF INDIANA
PROFESSIONAL ENGINEER
Brandon T. Bunker
DATE:
THIS DRAWING AND THE IDEAS, DESIGNS AND CONCEPTS CONTAINED THEREIN ARE THE EXCLUSIVE INTELLECTUAL PROPERTY OF THE SCHNEIDER CORPORATION, AND ARE NOT TO BE USED OR REPRODUCED, IN WHOLE OR IN PART, WITHOUT THE WRITTEN CONSENT OF THE SCHNEIDER CORPORATION.
© COPYRIGHTED BY THE SCHNEIDER CORP. (2002)

Schneider
THE SCHNEIDER CORPORATION
12821 E. New Market Street
Suite 100
Carmel, IN 46032
Telephone: 317.569.8112
Fax: 317.822.3410
www.schneidercorp.com
Architecture
Civil Engineering
Environmental Engineering
Geotechnical Services
GIS * LIS
Home Builder Services
Interior Design
Land Surveying
Landscape Architecture
Transportation Engineering

CONNER CROSSING OF NOBLESVILLE
BROOKSTON PHASE ONE
NOBLESVILLE, INDIANA
PRIMROSE DEVELOPMENT, L.L.C.
CARMEL, INDIANA

DATE: 6/26/02 PROJECT NO.: 3659.004
DRAWN BY: DCC CHECKED BY:
SHEET TITLE: STORM SEWER PLAN & PROFILE
DRAWING FILES:
XREF: 3659.004\DWG\3659-001-603.DWG
XREF: CA-1-BS.DWG
XREF: COI-1-BS.DWG
XREF: FPN-1-BS.DWG
XREF: BRK-1-BS.DWG
XREF: 3659001.DWG
XREF: FURK-BS.DWG
XREF: 004-STW.DWG
SHEET NO.:

HOLEY MOLEY SAYS
"DON'T
DIG
BLIND"



"IT'S THE LAW"
CALL 2 WORKING DAYS BEFORE YOU DIG
1-800-382-5544
CALL TOLL FREE

PER INDIANA STATE LAW IS-69-1991,
IT IS AGAINST THE LAW TO EXCAVATE
WITHOUT NOTIFYING THE UNDERGROUND
LOCATION SERVICE TWO (2) WORKING
DAYS BEFORE COMMENCING WORK.

GENERAL NOTES

1. TEMPORARY TRAFFIC CONTROL DURING CONSTRUCTION TO CONFORM TO APPLICABLE LOCAL AND STATE STANDARDS.
2. ALL CONSTRUCTION ACTIVITY ON THIS SITE TO BE PERFORMED IN COMPLIANCE WITH APPLICABLE O.S.H.A. STANDARDS FOR WORKER SAFETY.
3. IT SHALL BE THE CONTRACTORS RESPONSIBILITY TO FIELD VERIFY ALL UTILITY LOCATIONS BEFORE CONSTRUCTION BEGINS.
4. CONTRACTORS SHALL MINIMIZE DAMAGE TO EXISTING TREES.

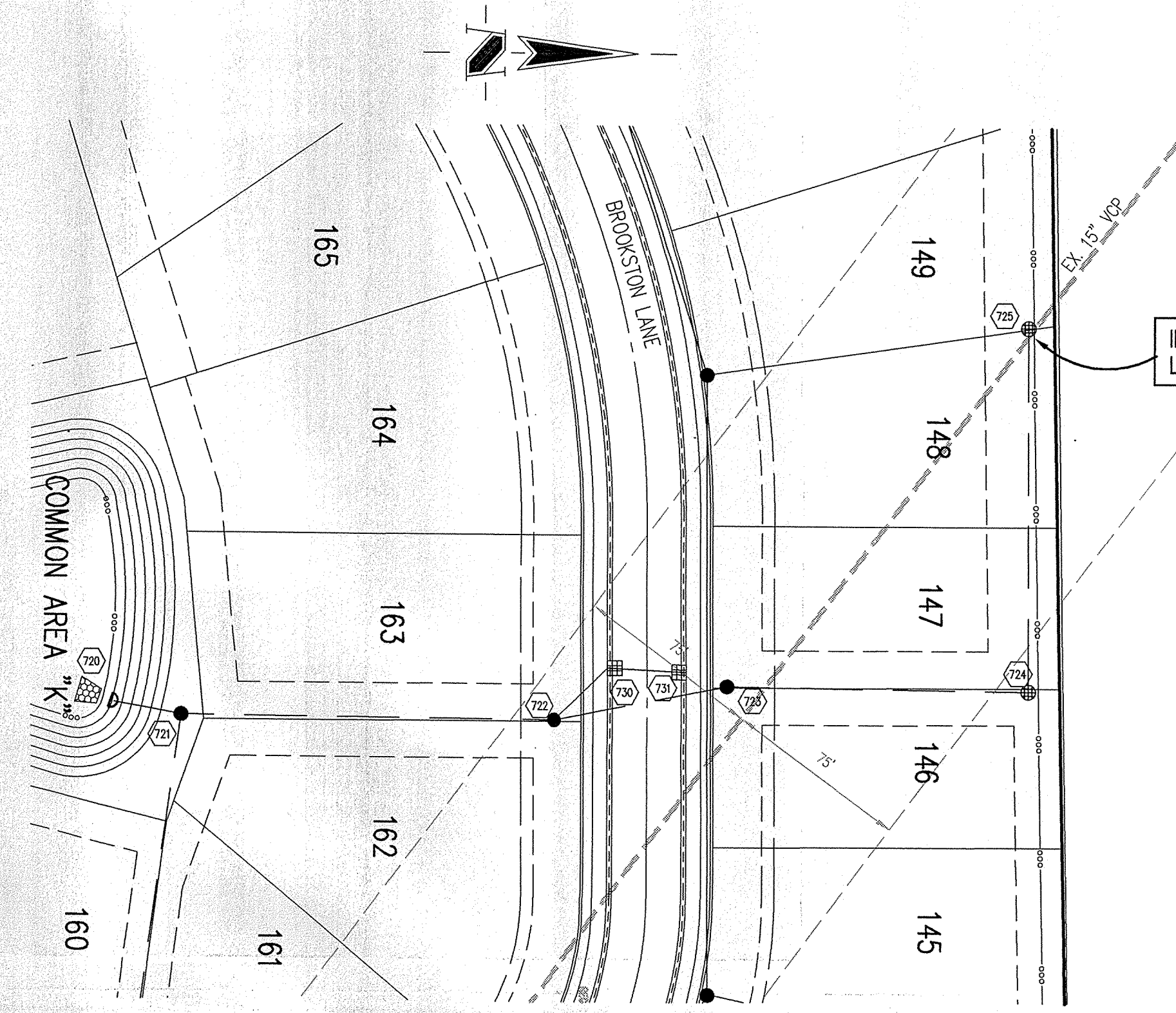
Sheet	Revised	Description
C804		Bedding Detail - Reinforced Concrete Pipe (RCP)
C805		Roll Curb Inlet Detail
C805		Beehive Inlet Detail
C805		Storm Manhole Detail
C812		Precast Concrete End Section
C812		RipRap Detail @ End Section

BENCHMARK

BM #1 - In Hamilton County, about 1.4 miles south of Westfield, 1.4 miles south along "old" U.S. Highway 31 from its intersection with State Road 32 in Westfield to an east-west cross road, at a 1.5 foot pipe culvert under the road, in the northeast quarter of the intersection, set in the top of the east concrete headwall of the culvert, 23 feet north of the center line of the east-west road, 15 feet east of the center line of the north-south road, 601 feet north of the south face of the headwall, a chiseled triangle Elevation = 845.033 (NGVD 1929)

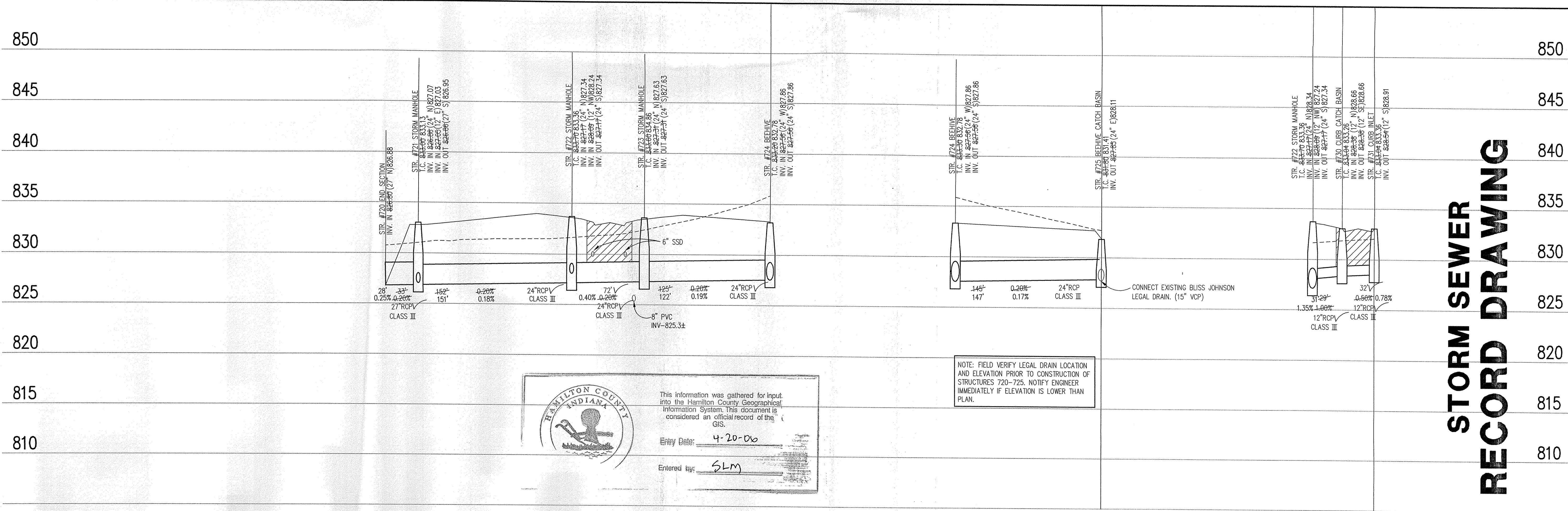
BM #2 - In Hamilton County, about 1.4 miles south of Westfield, 1.4 miles south along "old" U.S. Highway 31 from its intersection with State Road 32 in Westfield to an east-west cross road, thence 0.1 mile east to a concrete bridge over Cool Creek, set in the top of the west end of the north guardrail of the bridge, 11 feet north of the center line of the road, 2.9 feet above the roadway, 1.4 feet east of the west face of the north guardrail, a Standard Indiana Flood Control and Water Resources Commission bronze benchmark tablet, stamped "HAM 16 1959" (Note: bronze disk gone) Elevation = 846.716

NOTE:
ANY TYPE "A" STORM STRUCTURE IN WHICH INCOMING OR OUTGOING PIPES ARE NOT PERPENDICULAR TO THE STRUCTURE SHALL BE INCREASED IN SIZE SO THAT THE CORNERS OF STRUCTURE ARE LEFT INTACT OR CHANGE TO A MANHOLE.



STORM SEWER PLAN

SCALE: 1"=50'



STORM SEWER RECORD DRAWING

HAMILTON COUNTY INDIANA

This information was gathered for input into the Hamilton County Geographical Information System. This document is considered an official record of the GIS.

Entry Date: 4-20-06

Entered by: SLM

NOTE: FIELD VERIFY LEGAL DRAIN LOCATION AND ELEVATION PRIOR TO CONSTRUCTION OF STRUCTURES 720-725. NOTIFY ENGINEER IMMEDIATELY IF ELEVATION IS LOWER THAN PLAN.

STORM SEWER PROFILE

LEGEND		
	Existing Grade	
	New Grade	
	Granular Backfill	

SCALE: HORZ.: 1"=50'
VERT.: 1"=5'

BRANDON T. BURKE
REGISTERED
No. CC30075
STATE OF INDIANA
PROFESSIONAL ENGINEER

Brand T. Burke
DATE: _____
THIS DRAWING AND THE IDEAS, DESIGNS AND CONCEPTS CONTAINED HEREIN ARE THE EXCLUSIVE INTELLECTUAL PROPERTY OF THE SCHNEIDER CORPORATION AND SHALL NOT BE USED OR REPRODUCED, IN WHOLE OR IN PART, WITHOUT THE WRITTEN CONSENT OF THE SCHNEIDER CORPORATION.
© COPYRIGHTED BY THE SCHNEIDER CORP. (2002)

Schneider

THE SCHNEIDER CORPORATION
12821 E. New Market Street
Suite 100
Carmel, IN 46032
Telephone: 317.569.8112
Fax: 317.826.5410
www.schneidercorp.com

Architecture
Civil Engineering
Environmental Engineering
Geotechnical Services
GIS + LIS
Home Builder Services
Interior Design
Land Surveying
Landscape Architecture
Transportation Engineering

CONNOR CROSSING OF NOBLESVILLE
BROOKSTON PHASE ONE
NOBLESVILLE, INDIANA

PRIMROSE DEVELOPMENT, L.L.C.
CARMEL, INDIANA

DATE: 6/26/02 PROJECT NO.: 3659.004
DRAWN BY: DCC CHECKED BY:
SHEET TITLE: STORM SEWER PLAN - PROFILE
DRAWING FILES: N:\3659\004\DWG\C601-603.DWG
XREF: CA-1-BS.DWG
XREF: C01-1-BS.DWG
XREF: PBN-1-BS.DWG
XREF: BRK-1-BS.DWG
XREF: 365900S.DWG
XREF: FUTR-BS.DWG
XREF: 004-STM.DWG
SHEET NO.: C603